



THE WALL

Sales performance matters.

Focus on new consumer experiences and increase sales

*Even during staff shortage,
The Wall ensures continuous service
and boost the sales of self-served beverage.*



Multiply The Wall in your point of sales and benefit of rising sales



Self-service increases usable place



Decreased waste



Change drinks whenever you want in a few clicks



Diversified payment modes

Focus on the consumer experience to build loyalty



- ⊕ **No longer waiting** in a crowded bar
- ⊕ Thanks to the sale by the centiliter, the consumer can **test the drinks** before choosing the one that suits him
- ⊕ Payment by RFID system or Credit Card with our BevPay system and the myPOS solution
- ⊕ Benefit from **an advance in cash flow** thanks to the RFID solution
- ⊕ Router and SIM card provided to ensure a constant connection

Enable your IoT world with Drinkotec



With 40 years of expertise in beverage dispensers, Drinkotec knows the industry's needs inside out. Over the years we created an **360° ecosystem** where Data matters.

All our devices are connected to a unique secured analytics platform: **Loop³⁶⁰ Analytics**.

Beverage brands and their customers will empower the teams with this **powerful & user-friendly** beverage operations platform to manage sales, marketing, technical, inventory operations and drive customer success.

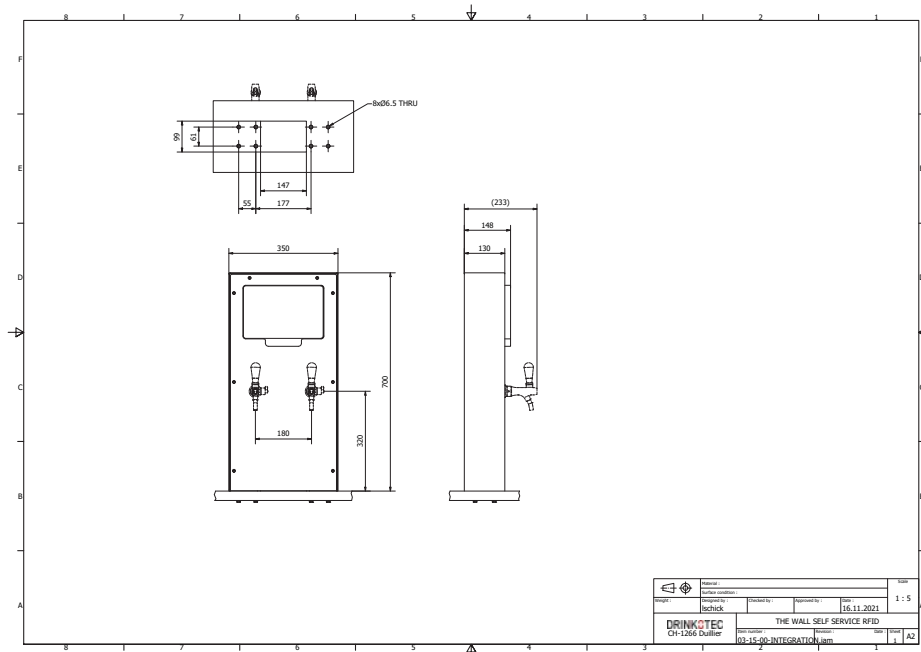
Bakusyu Club Pop eye

Carlsberg
2 187 260 CHF

Main platform features

- ⊕ Real-time sales performance
- ⊕ Optimized SPR (Sold-to-Poured Ratio)
- ⊕ Remote Beverage quality monitoring
- ⊕ Inventory anticipation
- ⊕ New engagement marketing channel





Standard Requirements

Countertop version:

Minimum counter height required: 85 cm

Maximum counter height: 100 cm

Provide for drilling the cabinet in the following dimensions:

147 x 99 mm

Connectivity

4G equipped

General

Maximum number of managed taps	2
User interface	Touch Panel
Dispense button branding	Graphic panel touch card

Specification

Physical Data

Height	700 mm
Width	350 mm
Depth	233 mm
Weight	17 kg

Electrical

Mains voltage/frequency	Male plug type F / type J _100-240 V
Power	90 W
AC current (Typ.)	0.95A@115VAC 0.5A@230VAC 0.4A@277VAC

For further information:
price list, distributor contracts,
logistic etc., please send a request
to our sales team at **sales@drinkotec.ch**

