



LEVEL UP



# Transparency matters.

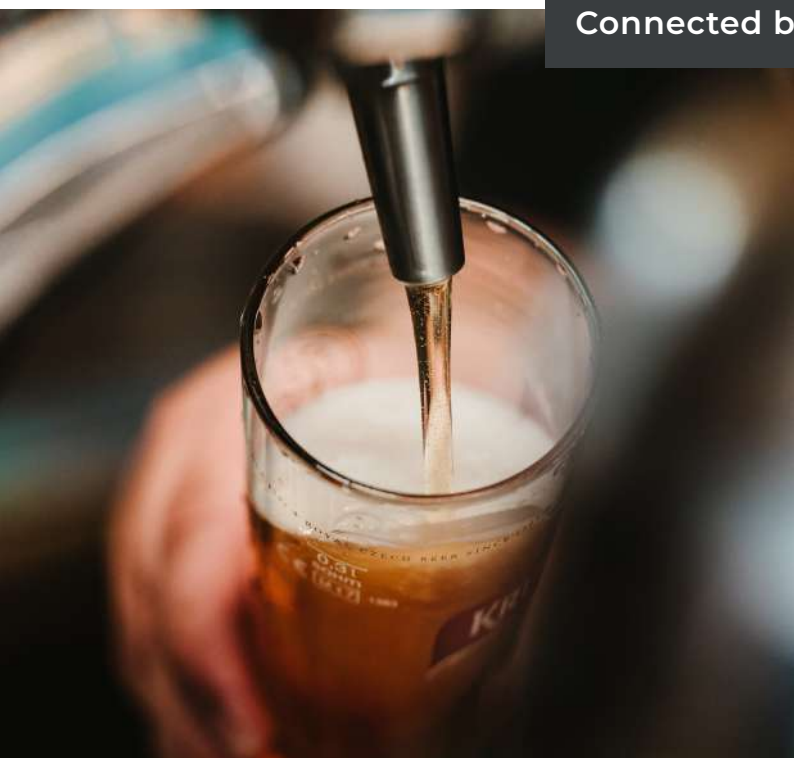
Boost performance right now and in a simple way



*Finally a simple and connected device that's able to count your dispensed pours.*

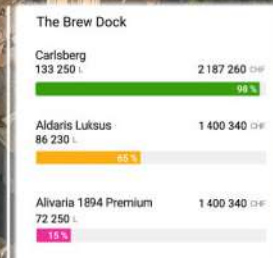
*Monitor the performance of your bars, keep track of the quality and freshness of your drinks on a daily basis..*

### Connected beer and wine lines counter



- ⊕ Easy to install
- ⊕ Monitor your cooling system
- ⊕ Optimize gas-CO2 consumption
- ⊕ 4G equipped

# Enable your IoT world with Drinkotec



With 40 years of expertise in beverage dispensers, Drinkotec knows the industry's needs inside out. Over the years we created an **360° ecosystem** where Data matters.

All our devices are connected to a unique secured analytics platform: **Loop<sup>360</sup> Analytics**.

Beverage brands and their customers will empower the teams with this **powerful & user-friendly** beverage operations platform to manage sales, marketing, technical, inventory operations and drive customer success.

Bakusyu Club Pop eye

Carlsberg  
2 187 260 CHF

## Technical features

- ⊕ Counter with 6 independent lines
- ⊕ Isolated flowmeter inputs with optocouplers
- ⊕ Two temperature inputs for NTC probes
- ⊕ A pressure input for a pressure sensor

## Main platform features

Real-time sales performance

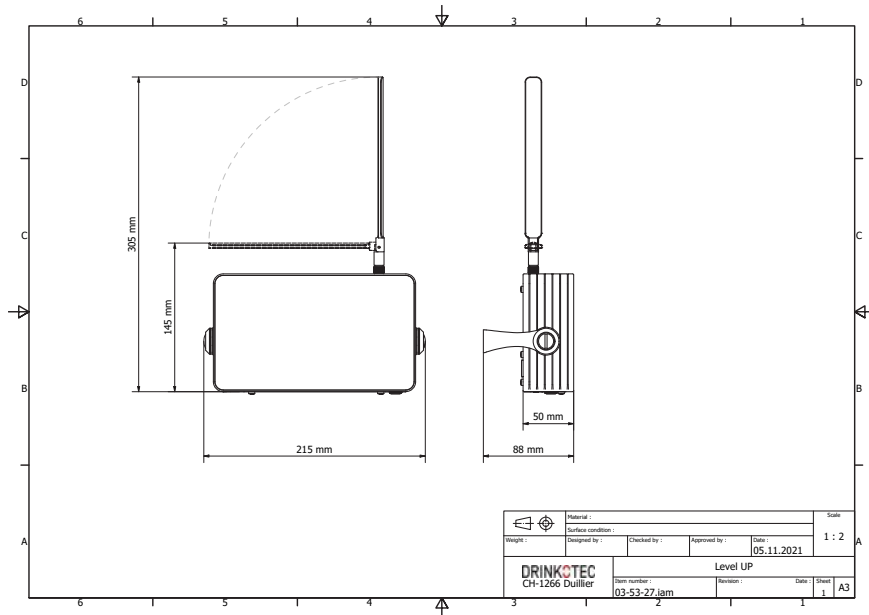
Optimized SPR (Sold-to-Poured Ratio)

Remote Beverage quality monitoring

Inventory anticipation

New engagement marketing channel





## Standard Requirements

- The LevelUp must be placed near the kegs

### Connectivity

4G equipped

### General

Maximum number of counted lines	6
User interface	Touch Panel

### Specification

#### Physical Data

Height	148 mm
Width	195 mm
Depth	88 mm
Weight	1 kg

#### Electrical

Mains voltage/frequency	Male plug type F / type J _100-240 V
Power	17,5W

#### Operating Temperature

Min/Max	2°/55°
---------	--------

## Specification

### Flow Meters/Turbine

Accuracy	+/- 2.0%
Repetition	< +/- 0.25%
Flow rate	0.04l - 15 l/min (~10 l/min)
Maximum pressure	10 Bar
Pulses/liter	236 (with water at 3.3 Bar)
Accuracy	+/- 5 ml

### Temperature sensor

Temperature range	-50 to + 80°C
Accuracy	+/- 1°C

### Pressure sensor:

Voltage	5VDC
Pressure range	0-10 Bar
Output voltage	0-5 VDC
Accuracy	+/- 0.1Bar (ADC 12 bits)

For further information:  
price list, distributor contracts,  
logistic etc., please send a request  
to our sales team at **[sales@drinkotec.ch](mailto:sales@drinkotec.ch)**

