

A black control panel for a Cascade+ Cellar. The screen shows the following data:

Cascade+ Cellar				2022-09-24 11:53:19	
ID : 219					
27.5 °C Storage	27.3 °C Storage	27.4 °C Storage	29.1 °C Storage		
-0.0 Bar HP Allgal1	-0.0 Bar HP Allgal1	-0.0 Bar HP Allgal2	29.9 w Power		

CELLAR PULSE

Quality
matters.

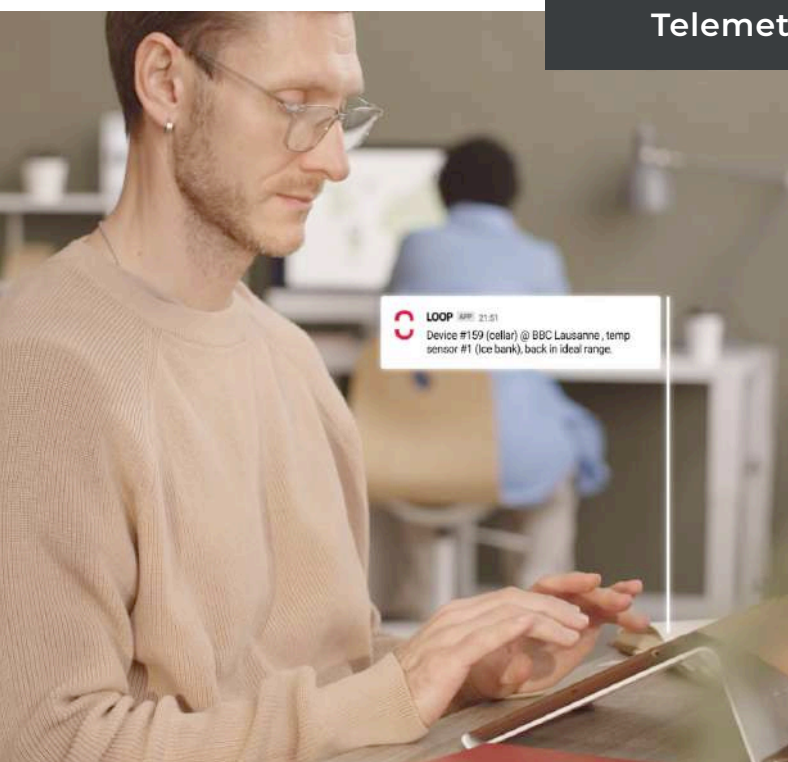
Temperature and pressure measurement to keep your drinks fresh and tasty at all times.





Even **remotely**, monitor the proper functioning of your **cellar**.

Reduce your losses as much as possible thanks to automated incident alerts and notifications.



Telemetry and data

- ⊕ View all measurements directly on the 7" screen
- ⊕ Connected, your device gives you access the status of your cellar from anywhere
- ⊕ Set up custom alerts and send them to any technician in the fields
- ⊕ Easy to install

Enable your IoT world with Drinkotec



With 40 years of expertise in beverage dispensers, Drinkotec knows the industry's needs inside out. Over the years we created an **360° ecosystem** where Data matters.

All our devices are connected to a unique secured analytics platform: **Loop³⁶⁰ Analytics**.

Beverage brands and their customers will empower the teams with this **powerful & user-friendly** beverage operations platform to manage sales, marketing, technical, inventory operations and drive customer success.

Bakusyu Club Pop

Carlsberg
2 187 260

Technical features

- ⊕ Up to 4 temperature measurements
 - ✓ Ambient
 - ✓ Cooler Ice Bank and circulation Return
 - ✓ Compressor cooler
- ⊕ Up to 4 pressure measurements
 - ✓ HP CO2
 - ✓ HP Nitrogen N2
 - ✓ HP Aligal 13
 - ✓ H2O

Main platform features

Real-time sales performance

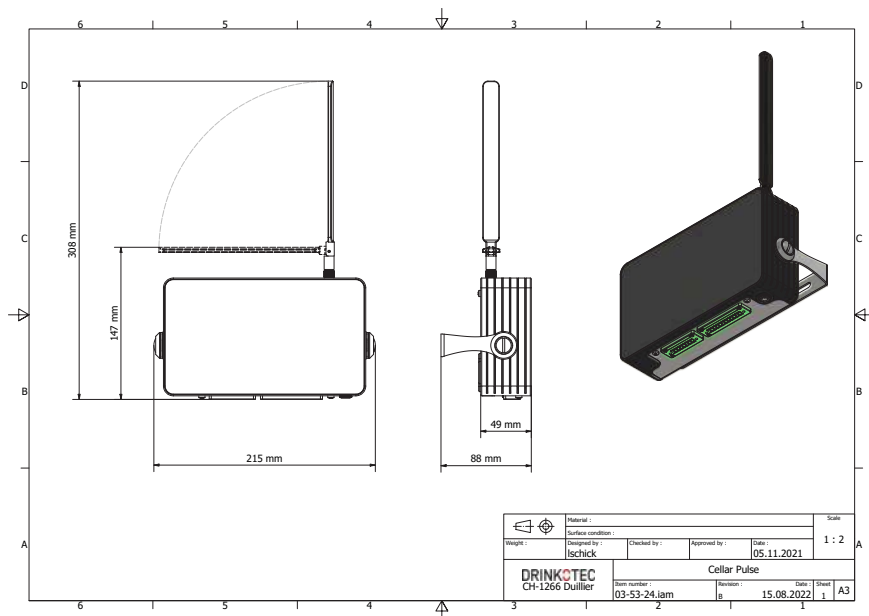
Optimized SPR (Sold-to-Poured Ratio)

Remote Beverage quality monitoring

Inventory anticipation

New engagement marketing channel





Standard Requirements

- The Cellar Pulse must be placed near your installations / storage place / kegs

Connectivity

4G equipped

General

Maximum measurements	4 temperatures 4 pressures
User interface	Touch Panel

Specification

Physical Data

Height	148 mm
Width	195 mm
Depth	88 mm
Weight	1 kg

Electrical

Mains voltage/frequency	Male plug type F / type J _100-240 V
Power	17,5W

Operating Temperature

Min/Max	2°/55°
---------	--------

Specification

Temperature sensor

Temperature range	-50 to + 80°C
Accuracy	+/- 1°C

Pressure sensor:

Voltage	5VDC
Pressure range	0-10 Bar
Output voltage	0-5 VDC
Accuracy	+/- 0.1Bar (ADC 12 bits)

For further information:
price list, distributor contracts,
logistic etc., please send a request
to our sales team at **sales@drinkotec.ch**

